

# Electric Vehicle Charging Infrastructure

## Terra multi-standard DC charging station 53

The Terra multi-standard DC charging station 53 is a configurable single, dual or triple port 50 kW fast charging station. Its flexible multi-protocol design allows CCS (C), CHAdeMO (J) and fast AC (G) functionality depending on the individual charging needs of each customer. Designed for the 'charge and go' segment, the Terra multi-standard DC charging station 53 is ideal for use at car dealerships, petrol stations & busy urban areas.

The Terra multi-standard DC charging station 53 combines industry standardization with fast charging technology to support all next-generation electric vehicles. Its multi-protocol design allows for easy tailoring to support CCS and CHAdeMO 1.0 for DC fast charging, as well as the EN61851-1 standard for AC charging (type 2, mode 3 charging). Seamless integration with several payment & billing platform solutions enable easy and secure payments via smart-phone, petrol station payment terminals and RFID card. The Terra multi-standard DC charging station 53's smart connectivity allows remote monitoring, maintenance and functional upgrades providing customers with the tools necessary to gather customer specific usage statistics and reports.

### Main features

- DC CCS standard fast charging station
  - 30 to 80% in 15 minutes
- Web connected & future proof
  - Remote assistance, management and servicing
  - Smart software upgradeability
- Easy to use
  - 8" daylight readable touch screen display
  - Display charging progress
  - RFID authorization
- Aesthetic design and all weather stainless steel housing
- Quick and easy installation
- Low operational noise



### Applications

- CCS EV dealers & importers
- Highway petrol/service station operators
- Busy urban areas
- Commercial fleet operators
- EV Infrastructure operators and service providers

### Key optional features

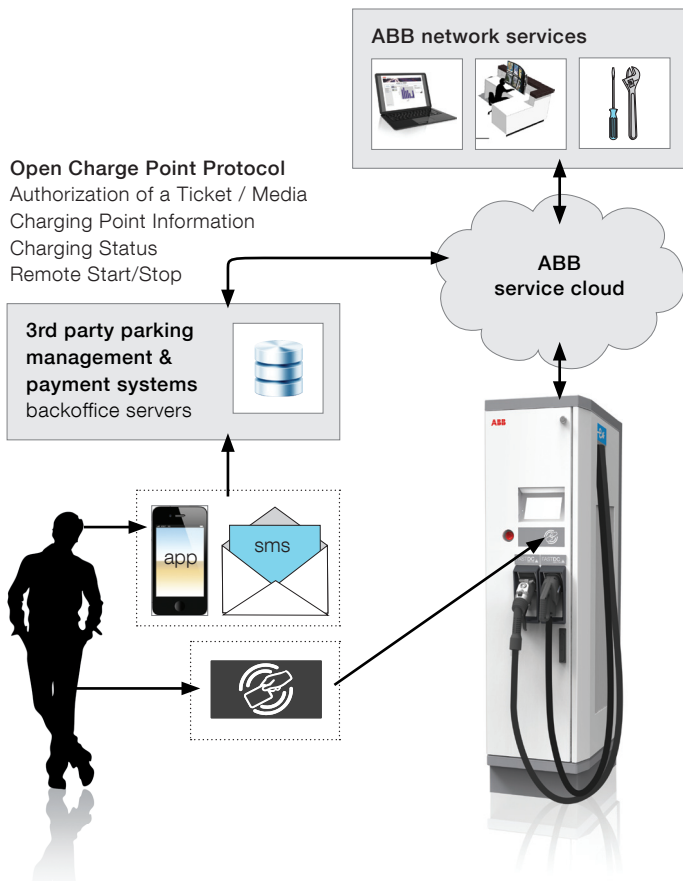
- AC fast charging expansion package
  - 22 kW AC connector
  - Simultaneous charging of AC and DC
  - MID certified AC meter to measure AC output power
- CHAdeMO DC fast charging expansion package
- Pin code authorization
- Input power limiting software avoids expensive grid upgrades
- Galaxy web based management software
  - Statistics module with data per user
  - Fleet access management module
- Point of sale, back office integration to enable external billing and payment solutions
- Charger status information for car navigation purposes
- Wide temperature range: -35°C to +55°C
- MID certified AC meter to measure total input power usage
- Customized branding possibilities and user interface styling
- Extended cable length to allow placement flexibility



Terra 53 C  
CCS Only

Terra 53 CJ  
CCS & CHAdeMO

Terra 53 CJG  
CCS, CHAdeMO &  
Fast AC



Galaxy web based management software allows remote monitoring, maintenance and functional upgrades providing customers with the tools necessary to gather usage statistics and reports.

### Technical specifications

<b>System</b>	Multi-standard DC charging station
Environment	Indoor / outdoor
Compliance and safety	CE / Option: CHAdeMO
<b>Input</b>	
AC power connection	3P + N + PE
Input voltage range	400 V <sub>AC</sub> +/- 10% (50 Hz or 60 Hz)
Rated input current & power	125A, 86 kVA
Power factor (full load)	> 0.96
Efficiency	95% at nominal output power
<b>DC output</b>	
Maximum output power	50 kW
Output voltage range	200 – 500 V <sub>DC</sub> (Combo-2) Option: 50 – 500 V <sub>DC</sub> (CHAdeMO)
Maximum output current	165 A <sub>DC</sub> +/- 5% (Combo-2) Option: 120 A <sub>DC</sub> (CHAdeMO)
<b>Option: AC output</b>	
Maximum output power	22 kW
Max AC output current	3 x 32 A
Output voltage range	400 V +/- 10%
<b>General</b>	
DC connection standard	EN61851-23 / DIN 70121 Combo-2 Option: CHAdeMO 1.0
DC cable length	2,9 meter or 3,4 meter (option: 6,5 meter)
DC plug type	Combo-2 / JEVS G105 Option: CHAdeMO
Option: AC connection standard	EN 61851-1:2010 (Renault / Daimler compatible)
Option: AC connector type	IEC62196 mode-3 type-2
RFID system	ISO/IEC14443A/B, ISO/IEC15693, FeliCa™ 1, NFC reader mode
Network connection	GSM / CDMA modem 10/100 Base-T Ethernet
Power consumption idle	25 W (max)
Protection	IP54
Operational noise level	45 dBA
Dimensions (D x W x H)	760 mm x 525 mm x 1900 mm

For more information please contact:

### ABB EV Charging Infrastructure

Delftweg 65  
 2289 BA Rijswijk  
 The Netherlands  
 Phone: +31 70 307 6200  
 Fax: +31 70 307 6209

[www.abb.com/evcharging](http://www.abb.com/evcharging)